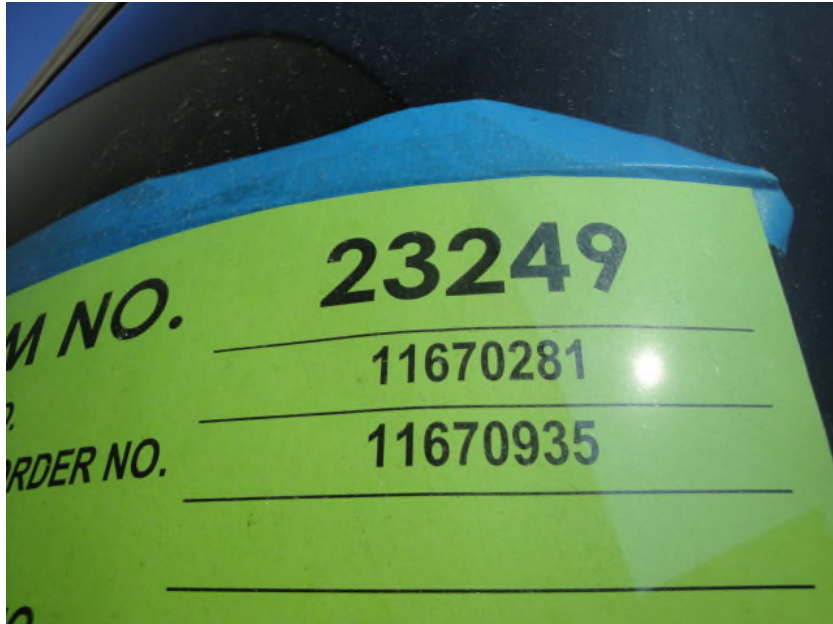


# Photo Album for Woodland Park, NJ

## Job 23249

### June 18, 2010

This week, your apparatus finished the main assembly line, and is scheduled for alignment and initial testing. Next week, reflective striping should be added (when requested), followed by third-party pump testing and road testing.



DSC00001



DSC00002



DSC00011



DSC00012



DSC00021



DSC00024



DSC00026



DSC00027



DSC00028



DSC00032



DSC00033



DSC00036



DSC00037



DSC00038



DSC00040



DSC00045



DSC00047



DSC00048



DSC00054



DSC00055



DSC00057



DSC00058



DSC00059



DSC00061



DSC00063



DSC00064



DSC00066



DSC00068



DSC00070



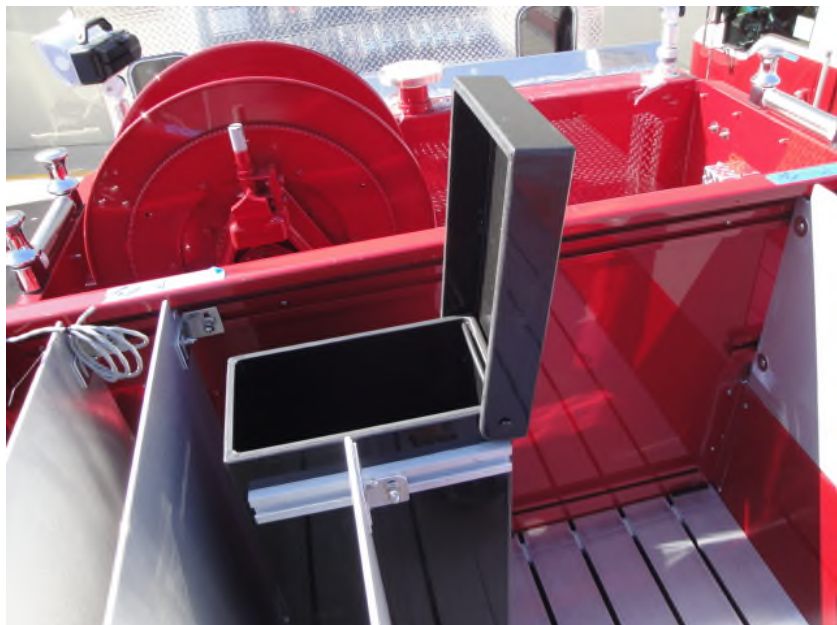
DSC00071



DSC00072



DSC00073



DSC00074



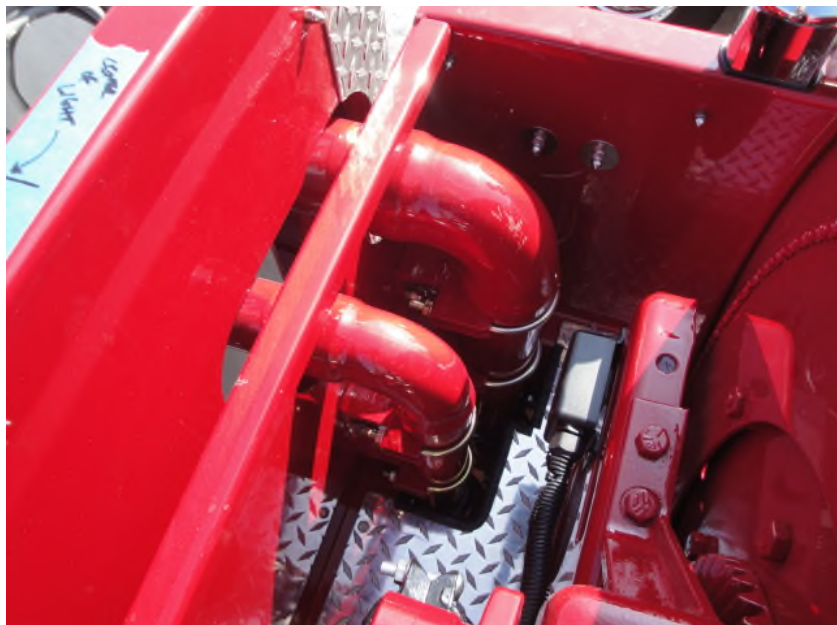
DSC00076



DSC00077



DSC00078



DSC00079



DSC00081



DSC00082



DSC00083



DSC00085



DSC00086



DSC00089



DSC00091



DSC00094



DSC00095



DSC00096



DSC00098



DSC00099



DSC00103



DSC00110

[WWW.FASCG.COM](http://WWW.FASCG.COM)